

# CRSE

## CULTURALLY RESPONSIVE SUSTAINING EDUCATION FRAMEWORK



### WHAT IS CULTURALLY RESPONSIVE SUSTAINING EDUCATION FRAMEWORK?

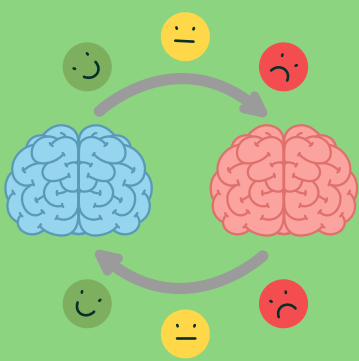
CRSE encompasses culturally responsive learning and teaching. This framework helps educators create student-centered learning environments that prepare students for rigor and affirms historically marginalized groups, racial linguistics, and cultural identities. CRSE also elevates historically marginalized groups and empowers agents of social change.



NYS Department of Education

### THE BENEFITS OF CRSE

- Enhancing Cognitive Development
- Social Connection
- Classroom engagement and retention
- Creating a community of **successful** learners



### THE GOALS OF CRSE

Culturally Responsive Teaching is an approach that leverages the strengths that students of color bring to the classroom to make learning more relevant and effective. A major goal of Culturally Responsive Teaching is to reverse patterns of underachievement for students of color.

CRSE Framework helps educators design and implement a **student-centered** learning environment with these goals:

- Affirms** racial and cultural identities, fosters positive academic outcomes.
- Develops** a student's ability to connect across cultures.
- Empowers** students as agents of social change.
- Contributes** to a student's engagement, learning, growth, and achievement, through the cultivation of critical thinking.



### THE FOUR PILLARS OF CRSE:

- Welcoming** and affirming environment
- High** expectations and rigorous instruction
- Inclusive** curriculum and assessment
- Ongoing** professional learning

### CRSE SUPPORTS DEI

CRSE supports Diversity, Equity, and Inclusion by affirming students' cultural backgrounds. The framework also supports educational pluralism. This is a concept where students can leverage aspects of their cultural background as assets for learning and sustain those assets throughout their schooling.



### SUPPORTING CRSE AT HOME

Advocate for student success, rigorous learning and independent thinking. Ask your children questions about self and community that may serve as opportunities to connect in-school learning with the world outside the classroom. Participate in decision-making around programs, policies, and learning activities that impact the school community.



### SUPPORT STUDENTS IN YOUR DISTRICT

Let your district know that you and NYS DOE support CRSE! Ask your district to conduct a periodic review of school policies that ensure welcoming environments for all students. Make sure educators are supported in providing quality education to students. Push for your district to provide opportunities for teachers and leaders to receive trainings on topics related to DEI. Learn more from LISSA here:

